



Sherrill Occasional

SPRING 2019 SUPPLEMENT





The Lund Chairside table is both graceful in design and functional. The all-welded metal base is finished in a plated white bronze and the figured maple top and mid-shelf are metal edge banded adding highlights to the light grey tones of the wood.



Art Deco styling in hammered iron in a bronze finish with Antique mirrored surface. A most interesting table to be chairside.



969-352 Lund Chairside Table

DIA. 18 H26 IN.
Metal / Maple
Plated White Bronze
Light Grey finish
Lund Collection



969-403 Calvert Cube

W19 $\frac{3}{4}$ D18 $\frac{5}{8}$ H24 $\frac{1}{2}$ IN.
Hammered Iron / Glass
Bronze / Antiqued Mirror
Calvert Collection



969-362 Seville Round Spot Table

DIA. 14 H23 IN.
Quartered Oak / Metal
Sun Bleached Driftwood (Top)
Aged Brass
Seville Collection



969-361 Seville Round End Table

DIA. 24 H26 IN.
Quartered Oak / Metal / Glass
Sun Bleached Driftwood
Aged Brass
Seville Collection

The Seville Spot Table is a solid all-welded iron table in a handsome aged brass finish with a quartered oak veneered top in a pie-cut pattern. The wood blends nicely with the aged brass in a sun-bleached driftwood finish.

The Seville Round End Table is a unique blend of tubular iron uprights that are welded to round flat stock at the top and base and a concentric stretcher in the middle. The metal is an aged brass that blends well with the Quartered oak veneers that are finished in a sun-bleached driftwood and house an inset clear glass top.

The Mya Chairside Table is constructed of gmelina solids with all surfaces inlaid with "crazy-cut" Capiz shell. Altogether a very unique conversation piece to accompany your favorite chair.



969-390 Mya Chairside Table

DIA. 16 H24 IN.
Gmelina / Capiz Shell
Bleached White
Masterpiece Collection

The Luna Drink Table is a combination of bleached abalone shell surfaces with a footed stainless steel metal base. The table has a very clean tropical feel and would add a fun, yet functional, dimension to any room.



969-391 Luna Drink Table

DIA. 14 H22 IN.
Gmelina / Abalone Shell
Bleached White
Stainless Base Accents
Masterpiece Collection

Inspired by 19th century Neo-Classical Italian antiques. A handy table to have at your chairside for drinks, with an oak veneered top that is accented with a very subtle gallery over an apron rail drawer elevated on squared canted corner posts that are joined by a lower shelf.



969-373-EG Fulton Drink Table

W14 D22 H22 IN.
Quartered Oak
Shown in -EG Earth Grey finish
Also available in -CB Carob Brown finish
Champagne Textured Hardware
Fulton Collection



A terrific side table inspired by 19th century Italian originals. The quartered oak veneered top is accented with a very subtle gallery over an apron rail drawer elevated on squared, canted corner posts that are joined by a lower shelf. The finish is an earth grey wood tone accented with textured cast brass pulls.



969-372-EG Fulton Side Table

W23 D27 H26 IN.
Quartered Oak
Shown in -EG Earth Grey finish
Also available in -CB Carob Brown finish
Champagne Textured Hardware
Fulton Collection



A handy table to have chairside for drinks or books, with an inset blue forest marble top elevated by a metal base with rectangular corner posts joined by a low fretwork shelf. The ends of the table are accented with the fret detail. Finished in a rich bronze hue.



969-415 Marcos Chairside Table

W12 D22 H22 IN.
Metal / Marble
Kona
Honed Blue Forest Marble Top
Marcos Collection

A handsome side table with an inset honed blue forest marble top elevated by a metal base with rectangular corner posts joined by a low fretwork shelf. The ends of the table are accented with the fret detail. Finished in a rich bronze hue.



969-414 Marcos End Table

W23 D27 H24 IN.
Metal / Marble
Kona
Honed Blue Forest Marble Top
Marcos Collection



The Chicklet End Table provides the side table opportunity to match the Chicklet Cocktail Table and Console. Handsome jewelry-like bracelet design in an aged gold finish with a honed white Travertine top.



969-417 Chicklet End Table

W23 D23 H24 IN.
Metal / Honed Travertine Top
Gold finish
Infinity Collection



Square tubular, hammered metal framing in an antique nickel finish combine with an antique mirrored top and mid-shelves made of inlaid white agate. This four tiered accent table can certainly fill many functions and add interest to any setting.

969-400 Eli 4 Tiered Accent Table

W30 D18 H34¼ IN.
Aged Iron / Agate Stone
Antiqued Glass
Nickel / White finish
Masterpiece Collection



The Manhattan Round End Table is much the same design as the cocktail; but, we have added a mid-shelf to the design for extra design integrity and storage capability.



239-935 Manhattan Round End Table 

DIA.28 H26 IN.
Oak Solids & Veneers
No Distressing
Shown in -M2 Carob Brown finish
Manhattan Collection

Simple and nicely scaled in oak solids and oak veneers. The reversed straight-grain oak veneered top has a mitered-corner border and tapered legs housing a pull-out tray in the top apron and a narrow drawer in the mid-shelf. Finished in a warm umber and highlighted with antique brass hardware.



969-422 Branson Side Table

W24 D27 H25 IN.
Oak Solids / Oak Veneers
Antiqued Brass Hardware
Umber finish
Branson Collection



215-945 Sonoma End Table 

W26 D18 H24 IN.
Ash Solids & Veneers
Lightly Sandblasted
Shown in -A5 Smoked Ash/Sandblasted finish
Sonoma Collection



The Sonoma End Table adds another dimension to the Sonoma Collection. This smaller end table size adds to the collection with its sandblasting surfaces providing a more casual attitude.



101-945 Sonoma End Table 


W26 D18 H24 IN.
Ash Solids & Veneers
No Distressing
Shown in -10 Beeswax finish
Sonoma Collection



Slightly smaller scale addition to the Sonoma Collection of tables. Parson's styling in ash solids and veneers that have been smooth sanded to accept any finish opportunity.


New cocktail table extension to the Sonoma Collection with surface sandblasting. The sandblasting opens the grain of the wood to allow finishes with extra detail to be more obvious, typically adding casual characteristics. Smaller in scale at 48 x 24" than the 60 x 40" version.



215-825 Sonoma Small Cocktail 
W48 D24 H18 IN.
Ash Solids & Veneers
Lightly Sandblasted
Shown in -A5 Smoked Ash/Sandblasted finish
Sonoma Collection

Heavy in scale but simple in parsons style design this Sonoma Cocktail Table provides an unusual size to help with those difficult space needs. Ash solids and veneers with an exaggerated dovetail detail. Smooth sanded to accept any finish opportunity.



101-825 Sonoma Small Cocktail 
W48 D24 H18 IN.
Ash Solids & Veneers
No Distressing
Shown in -10 Beeswax finish
Sonoma Collection



969-371-CB Fulton Cocktail Table
W54 D32 H19 IN.
Quartered Oak
Shown in -CB Carob Brown finish
Also available in -EG Earth Grey finish (shown below)
Champagne Textured Hardware
Fulton Collection



Rectangular cocktail with clipped corner top and lower shelf constructed of quartered oak and housing a single drawer in the center of the apron. The finish is a very labor intensive earth grey contrasted with the textured champagne hardware.




The Branson Cocktail provides a casual traditional presence with oak solids and veneers in a warm umber finish. Reverse, straight-grain oak veneered top with oak solids and a center drawer contrast nicely with the aged brass hardware.



969-421 Branson Cocktail Table
W56 D28 H19 IN.
Oak Solids / Oak Veneers
Antiqued Brass Hardware
Umber finish
Branson Collection

The Manhattan Round Cocktail Table is large in stature constructed of oak solids and veneers using heavy wood stock. The base design is comprised of a three mitered base design with uprights supporting the heavy, perimeter-banded straight grained, round top.



239-835 Manhattan Round Cocktail Table 
DIA.48 H17 IN.
Oak Solids & Veneers
No Distressing
Shown in -M2 Carob Brown finish
Manhattan Collection

The Seville Round Cocktail Table is a unique blend of tubular iron uprights that are welded to round flat stock at the top and base and a concentric stretcher in the middle. The metal is an aged brass that blends well with the Quartered oak veneers that are finished in a sun-bleached driftwood and house an inset clear glass top.



969-360 Seville Round Cocktail Table
DIA.38 H17 IN.
Quartered Oak / Metal / Glass
Sun Bleached Driftwood
Aged Brass
Seville Collection

A nice new addition to the Trifecta Collection of hammered iron tables is this stylish cocktail table. The table is all-welded iron with horseshoe shaped legs and a round top perimeter and leg stretcher. The top is heavy 40 inch diameter clear glass.



965-126N Round Cocktail Table - Nickel Leaf
DIA.40 H18¾ IN.
Iron / Glass
Nickel Leaf
Masterpiece Collection

This handsome metal cocktail table is all-welded construction finished in a rich bronze hue. The marble top is a very dramatic, honed Blue Forest stone. The sides of the table are accented with the unique single fret detail.



969-413 Marcos Cocktail Table
W50 D30 H19¼ IN.
Metal / Marble
Kona
Honed Blue Forest Marble Top
Marcos Collection

An addition to the Calvert Collection of tables, the Calvert Cocktail Table provides a rectangular opportunity. Hammered iron in a natural finish with antique mirrored inset top.



969-404 Calvert Cocktail Table
W48 D26 H18½ IN.
Hammered Iron / Glass
Bronze / Antiqued Mirror Top
Calvert Collection

The Dante Game Table makes a great chairside table for the chess buff. The all metal frame is finished in an interesting ash tone. The top is bordered with an inset surface designed for the chess pieces that come with the table. The top is inset marble, in black and white, creating the game board.



969-411 Dante Game Table with Chess Pieces
W20¼ D14½ H22½ IN.
Metal / Marble / Ash
Black / White finish
Masterpiece Collection



This Jonah cabinet provides a combination of gmelina solids and saguran surfaces. Finished in a clear natural lacquer that provides a clear view of the textured surface. The hardware is stainless steel that offers a nice accent with the saguran and is complemented by the stainless pad feet.



969-392 Jonah 3 Drawer Cabinet
W40 D18 H32 IN.
Gmelina / Saguran
Stainless Handles & Pad Feet
Natural finish
Masterpiece Collection

ALSO AVAILABLE:
969-392W Jonah 3 Drawer Cabinet
W40 D18 H32 IN.
Gmelina / Saguran
Stainless Handles & Pad Feet
Available in any CTH Custom finish
Masterpiece Collection

Handsome, nicely scaled Amar Bombe constructed of gmelina solids and surfaced with saguran in a natural finish. Two drawers with brass hardware and matching ferrules.



969-393W Amar 2 Drawer Bombe
W36 D18 H32 IN.
Gmelina / Saguran
Brass Ferruels & Handles
Natural finish
Available in any CTH Custom finish
Masterpiece Collection



ALSO AVAILABLE:
969-393 Amar 2 Drawer Bombe
W36 D18 H32 IN.
Gmelina / Saguran
Brass Ferruels & Handles
Natural Finish (see Jonah Chest above)
Masterpiece Collection

Casual three drawer Jacobean styling with oak solids and straight grain oak veneers. The top is clipped cornered and the drawered case sits on a heavy block base with bunn style feet. The finish is a warm umber that contrasts nicely with the antique brass hardware.



969-423 Branson 3 Drawer Cabinet
W52 D19 H36 IN.
Oak Solids / Oak Veneers
Antiqued Brass Hardware
Umber finish
Branson Collection



Inspired by 19th century Neo-Classical Italian originals. A rectangular oak veneered top is elevated on squared corner posts that flank three individual drawers that are mounted with cast brass pulls above a low secret drawer to hide valuables. Quartered oak in a earth grey finish.




969-374-EG Fulton Hall Chest
W40 D18 H34 IN.
Quartered Oak
Shown in -EG Earth Grey finish
Also available in -CB Carob Brown finish (shown right)
Champagne Textured Hardware
Fulton Collection



This Two Door Cabinet addition to the best selling Naples Collection of tables is constructed of Maple solids and veneers. The doors have heavy moldings that lend to striping or an internal contrast finish. The door hardware is a heavy brass in a slightly aged finish and the chamber houses one adjustable shelf.



222-999 Two Door Cabinet 
W46 1/4 D20 H38 IN.
Maple Solids & Veneers
No Distressing
Shown in -00 Combination finish:
-28 Sugar with -H2 Sancere Door Panels
Naples Collection

The Lund Four Drawer Cabinet is constructed of an all metal base in a Plated White Bronze finish with Maple solids in a light grey. The drawer fronts feature figured maple veneers that add interest and dimension to the design.



969-351 Lund Hall Cabinet
W38 D19 H32 IN.
Metal / Maple / Figured Maple
Plated White Bronze
Light Grey finish
Lund Collection

The Ella Bar Cabinet is a very interesting mix of materials. The case is gmelina with walnut veneers both inside and out. The face of the doors is inset with capiz shells providing a textured luminescent appearance on a stainless base. The interior has two tray drawers, wine racks, a fixed working surface and overhead wine glass holders.



969-395 Ella Bar Cabinet
W36 D16 H54 IN.
Gmelina & Walnut Veneer
Capiz Shell / Metal
Walnut Brown Interior
Bleached White Shell
Stainless Steel Base
Masterpiece Collection



Cleaned-lined, traditional profile in oak solids and veneers with tapered legs and flip matched straight grain oak veneers on the top. The finish is a warm umber nicely highlighted by the antique brass hardware.



969-420 Branson Console Table
W66 D14 H32 IN.
Oak Solids / Oak Veneers
Antiqued Brass Hardware
Umber finish
Branson Collection

Alder solids and beautiful Mappa Burl veneers join to make this beautiful and functional Media Console. The door and drawer surfaces are Mappa while the top is four piece alder slip matched veneer all in a clear Mappa finish and accented with aged nickel hardware. Designed with wire management in the case.



969-385 Kinsey Media Console
W66 D18 H32 IN.
Mappa Burl / Adler Solids
Aged Nickel Hardware
Mappa Burl finish
Kinsey Collection




969-370-EG Fulton Console Table
W54 D14 H32 IN.
Quartered Oak
Shown in -EG Earth Grey finish
Also available in -CB Carob Brown finish (shown right)
Champagne Textured Hardware
Fulton Collection



The Fulton Collection is constructed of handsome quartered sawn oak in an artisan hand-worked, earth grey finish. This 19th century Italian neo-classical design has a shaped top and lower shelf with a center drawer. The finish is as earth grey with champagne textured hardware.



234-460 Strada Credenza 
W72 D16 H34 IN.
Maple Solids & Veneers
No Distressing
Shown in -LL Hand Decorated finish:
-J4 Monaco with "Summer Breeze" Hand Painted Door Panels
Naples Collection



This long narrow credenza answers the needs of the dining room or the entertainment area. The four door case with adjustable shelves internally is mounted on a handsome metal base that ties back to the hardware and keeps the case from feeling too heavy.

The Chicklet Console Table is a must addition to the very popular Chicklet Square Cocktail Table. Nicely scaled and functional in its handsome aged gold finish on the jewelry-like bracelet design with a honed travertine top and tempered glass shelf.



969-416 Chicklet Console Table
W65 D15 H31 IN.
Metal / Honed Travertine Top
Gold finish
Infinity Collection

The Marcos Console Table is an all-welded metal frame finished in a rich bronze hue. The top is a very dramatic, honed Blue Forest Marble and the sides of the table feature a single fretwork motif with a lower clear glass shelf.



969-412 Marcos Console Table
W50 D30 H32 IN.
Metal / Marble
Kona
Honed Blue Forest Marble Top
Marcos Collection

This open deco style console provides a very interesting blend of materials. The iron is beautifully finished in a gold leaf contrasting with the unique polished Tikal Green Marble top.



969-418 Bruno Console Table
W37 1/4 D12 H36 IN.
Marble / Metal
Antiqued Brass Hardware
Tikal Green Marble Top
Gold Leaf finish
Masterpiece Collection



This stately Kinsey Bookcase is built from Alder solids and beautiful Mappa Burl veneers. The center drawer is book and butt matched adding further interest. All in a handsome clear Mappa finish that is accented with aged nickel hardware.



969-384 Kinsey Bookcase
W38 D16 H80 IN.
Mappa Burl / Adler Solids
Aged Nickel Hardware
Mappa Burl finish
Kinsey Collection



A casual blend of iron and wood. This all-welded metal étagère has very clean transitional lines and is finished in a plated white bronze. The inset shelves are Maple in a light grey wood finish that contrast nicely with the iron.



969-350 Lund Étagère
W40 D15 H87 IN.
Metal / Maple
Plated White Bronze
Light Grey finish
Lund Collection




The Lund Writing Desk is a box-on-stand design. The stand, or base, is all metal with tapered legs and stretchers providing structural integrity. The Box design of the top is maple with figured maple veneers in a light grey finish blending with the bronze metal.

969-353 Lund Writing Desk
W52 D26 H30 IN.
Metal / Maple
Plated White Bronze
Light Grey finish
Lund Collection




The Naples Pier Mirror is designed to lean on or hang to wall. The maple solids and veneers allow most any finish to be effectively used and the styling lends itself to striping options.



222-535 Pier Mirror 
W40 D1½ H78 IN.
Maple Solids & Veneers
No Distressing
Shown in -M5 Dry Silver Fox finish
Available in any CTH Custom finish
Naples Collection

Great scale, rounded-corner wall mirror constructed of Maple solids and veneers. The shape and details allow the use of any custom finish effectively as well as two-toning or contrast striping.



222-530 Wall Mirror 
W40 D1½ H60 IN.
Maple Solids & Veneers
No Distressing
Shown in -87 Platinum finish
Available in any CTH Custom finish
Naples Collection



101-820-LL Cocktail in -C8 Cafe Noir finish with Khaki Stripe and inset picture frame design on top and side panels, Sherrill Furniture 2050 Sectional



Sherrill Occasional

HAND DECORATING

Sherrill Occasional's Custom Hand Decorating
Customize your Sherrill Occasional furniture by adding a personalized hand decoration to any case piece with custom finish options. These items are designated by the American Flag icon in the catalog. These embellishments are designed and handpainted by our American artisans. No stencils, no machines; every piece is a one of kind masterpiece, designed by you.

SELECT BORDER OR PANEL OPTION

For Border Options, choose door panels, case tops, or drawer fronts. For Panel Options, choose door panels, case tops, or drawer fronts. Available on any piece shown with American Flag in our catalog. Specify Finish Number -LL.

BORDER OPTIONS

Choose from 11 border options.



Acanthus



Agate



Art Deco



Greek Key



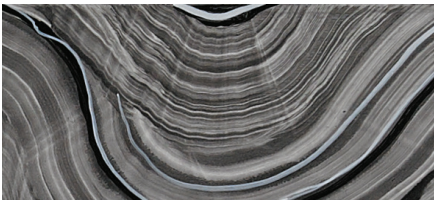
Malachite



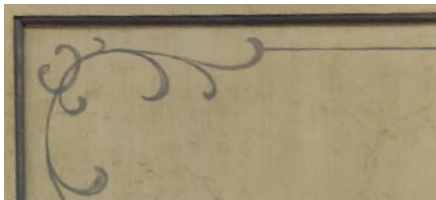
Petrified Wood



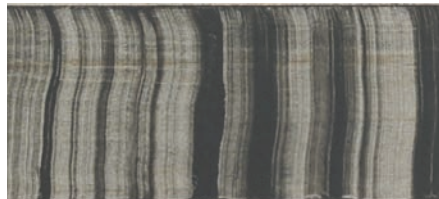
Picture Frame Striping



Riverbend



Scroll



Tiger's Eye / Black



Tiger's Eye / Brown

PANEL OPTIONS

Choose from 23 panel options.



Acanthus



Bamboo



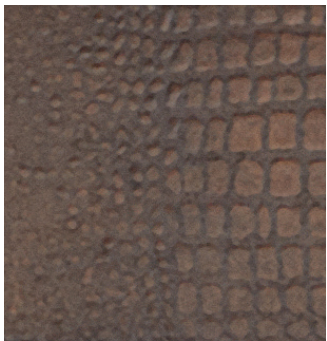
Black Marble



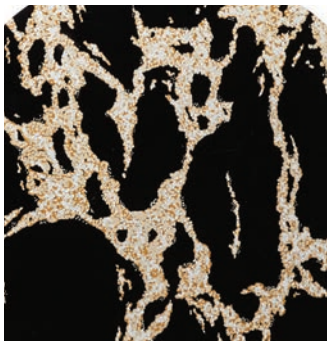
Bogolan



Chevron / Greyscale



Crocodile



Faux Bois



Feral



Foulard



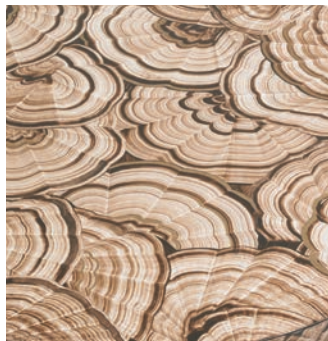
Imperial



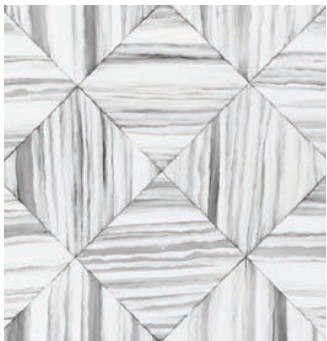
Innuendo



Jute



Malachite



Marbela / Grey



Marble / White



Moroccan



Nolan Green



Patchwork Zebra / Ebony



Slice / Grey



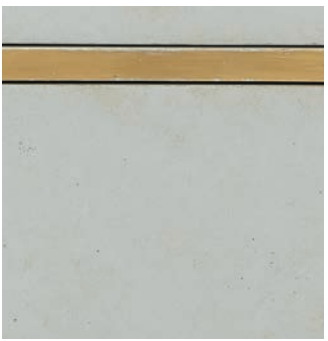
Slice / Brown



Splinter



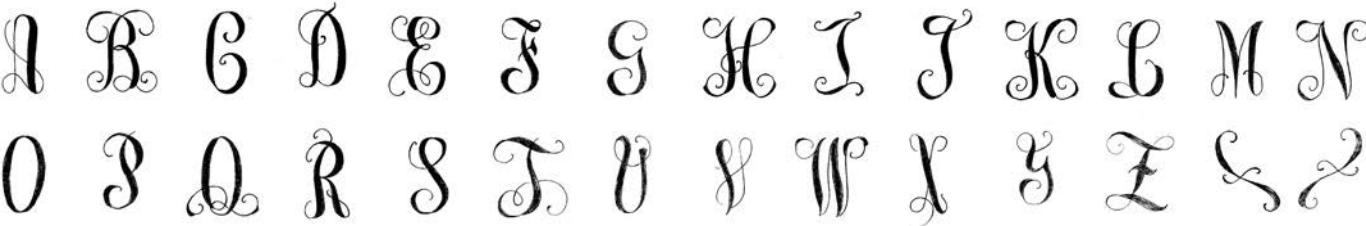
Turkish Rug



Wedgewood Blue

MONOGRAM OPTIONS

For Monogram Option, choose door panels, case tops, or drawer fronts.



SPECIFY THE COLOR USING ANY OF OUR STRIPING COLORS

If a style has physical distressing, we will rub through the areas of decoration to appear appropriately aged; if there is no physical distressing the decoration will not have rub through.





Beeswax 10 (H)
A medium brown high sheen finish with hand applied burnishing reminiscent of a well cared for 19th century antique.



Black Nickel 39 (H)
A deep nickel-colored paint finish with very fine black brushing on top and a high sheen to resemble black nickel metal.



Cafe Noir C8 (H)
The color of rich, dark Columbian coffee, Café Noir is a beautifully sleek very dark brown/black finish with a high sheen.



Carob Brown M2 (L)
Carob Brown is a low sheen, warm brown finish, that enhances Walnut's beautiful grain and warm tonal ranges.



Cashmere C7 (H)
Like a treasured cashmere scarf, the warmth and elegance of this high sheen dark walnut finish adds a touch of refinement to any item.



Dark Chocolate Cerrused N2 (L) *
Deep rich dark chocolate finish accentuated with white cerusing. Light sandblasting enhances the grain of the wood.



Dove 17 (L)
A soft patinated Belgian grey finish, hand-burnished and detailed with a gently spattered antique glaze.



Driftwood 76 (L)
A naturally aged pecan toned finish that has been enhanced with a bleached grey-beige overtone to characterize a weathered look.



Dry Silver Fox M5 (L)
Metallic silver color in a low sheen that is very refined allowing for transluence to show the natural beauty of the wood.

NOTE: Each finish has its own pre-determined sheen level. (L = Low Sheen, M = Medium Sheen, H = High Sheen)
Colors shown may vary from actual finishes due to the printing process. If a color match is mandatory, CTH/Sherrill Occasional must be notified in writing.



Dry Vintage Grey N4 (M) *
Casual semi-opaque grey finish with grain character highlighted through sandblasting.



Earth Grey EG (L)
Casual light grey hues with a dry antique vintage character.



Espresso 21 (M)
A deep rich black traditional finish with a deep luster that has a very light rub-through along the perimeter edges to appear worn.



Fog Grey B2 (L)
An opaque grey paint with a light taupe surface spatter providing a more casual and slightly aged appearance.



Gold F4 (H)
A gold paint with a glazed appearance with luster but in a low sheen to provide a more subtle gilt look.



Maison 07 (H)
A rich, hand-rubbed waxed, dark walnut high sheen finish enhanced with hand burnished edges, cow-tailing, and light spatter.



Malibar C3 (M)
A wonderful soft black finish providing a great deal of read through to brown undertones creating a char-brown look.



Masquerade II 19 (H)
A beautiful, clear, russet finish with a high sheen, light burnishing and slight spatter affording a more casual easy to live with presentation.



Mineral J7 (M)
A very clean, clear grey stained finish which accentuates the clarity and character of the wood species beneath.

*Finishes recommended for items constructed of Oak, Ash, or Elm, or if item is sandblasted.
If a color match is mandatory, CTH/Sherrill Occasional must be notified in writing. Colors shown may vary from actual finishes due to the printing process.



Mink 88 (H)
A rich dark brown high sheen finish with excellent clarity.



Modern Elm A2 (M)
Its clarity was developed to take advantage of striking grain patterns, this warm greyish brown finish creates a soft, transitional appearance.



Platinum 87 (L)
A metallic finish with an underlying base of silver and very subtle hand-padded gold overtones giving a platinum patina.



Sancere H2 (L)
A warm, creamy ivory painted finish with a very light brush stroke glaze applied over the top.



Sandstone P6 (L)
Casual lighter hue, whitewashed canvas effect. Depth of finish is subtle and crafted with character.



Silkwood 16 (L)
A very artistic tawny beige finish reminiscent of raw silk that has been very lightly spattered with moderate read-through to the wood.



Slate J5 (L)
An opaque grey paint with a taupe colored finishing glaze that provides an overall appearance of a grey-beige under a high sheen.



Smoked Ash 35 (H)
Semi-opaque greige finish with a high sheen lacquer top coat offering a clean, casual transitional appearance.



**Smoked Ash/
Sandblasted A5 (H) ***
Semi-opaque greige finish that utilizes a sand blasting technique to open the wood grain and add more depth of finish.

*Finishes recommended for items constructed of Oak, Ash, or Elm, or if item is sandblasted.
If a color match is mandatory, CTH/Sherrill Occasional must be notified in writing. Colors shown may vary from actual finishes due to the printing process.



Smoked Walnut P3 (H)
Natural clarity of the wood is enhanced with a darkened stain.



Soho 55 (H)
A rich medium value clear brown finish reminiscent of a lightly burnished antique pecan with a high sheen level.



Stone 79 (L)
Very clean beige finish that reads through to grey undertones enhancing the beauty of the wood grain beneath for a handsome casual feel.



Sugar 28 (L)
An opaque, clean white finish that resembles the color of white candle wax. Sugar is the most white of all our finishes.



Walnut 30 (L)
A rich, warm, high sheen chestnut brown finish that emphasizes the clarity and natural beauty of the wood beneath.



Washed Canvas J3 (L) *
A multi-step finish with a white filler intended to hang up in the open grain of ash, then sealed, dry brushed, then a low sheen lacquer.



Washed Linen 34 (L)
A very pleasing clean, off-white finish providing the natural color of washed cotton or fine ivory.



Color Match CM
Select any brand name paint color and we will Color Match it on your order, include name, number, and a color chip with the order.

*Finishes recommended for items constructed of Oak, Ash, or Elm, or if item is sandblasted.
If a color match is mandatory, CTH/Sherrill Occasional must be notified in writing. Colors shown may vary from actual finishes due to the printing process.



Black Pearl ML
Silver leaf squares that are heavily worn thru over top of a high gloss black paint background. Use finish code "BP" on order.



Bronze Patina ML
A very organic, variegated finish comprised of browns and grays reflecting an acid-washed surface. Use finish code "BZ" on order.



Gold Leaf Squares ML
Beautiful gold leaf finish painstakingly applied by hand in a grid pattern with very subtle black highlighting to create a slightly vintage appearance. Use finish code "GS" on order.

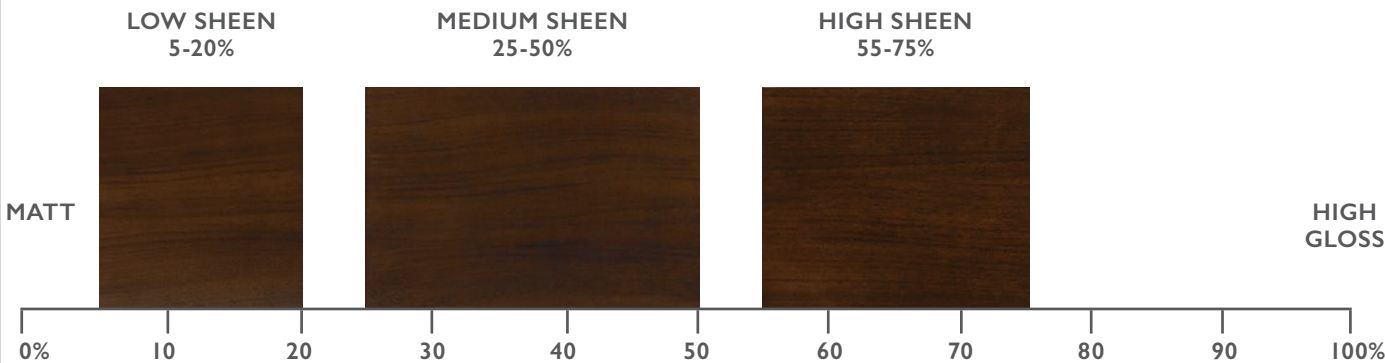


Silver Leaf Squares ML
A silver leaf finish painstakingly applied by hand in a grid pattern with very subtle black highlighting to create a slightly vintage appearance. Use finish code "SS" on order.



Silver Leaf with Gold ML
Leaf finish created by applying gold painted ground color, hand-applying silver leaf sheets in a grid pattern on top of the paint, then wearing the edges to expose the gold. Use finish code "SG" on order.

SHEEN LEVELS



Charcoal Shagreen S3



Crystal Grey Shagreen S5



Ivory Shagreen S1



Pearl Shagreen S4



Taupe Shagreen S2

STRIPING OPTIONS



Many items lend themselves to hand-striping applications, allowing you to bring out details not only of the furniture but in your surroundings as well.

Sherrill Occasional artisans are capable of hand-striping many items from our Select Collection of domestically made product, displayed in this catalog with the American flag icon. This allows you to add detail to your choice of primary custom finish and further enhance the product to make it your own. There are 11 striping colors from which to choose as shown above.

It is often apparent where an item might be striped: raised moldings, routed grooves, or incised decorative detailing. We can also hand stripe borders and edge treatments on many flat surfaces like tops, aprons, and side panels. A variety of items appear striped in the catalog providing suggested treatments.

Feel free to discuss the appropriateness of a striping application with your factory representative or one of our customer service specialists.



101-825
Sonoma Small Cocktail
Page 10



101-945
Sonoma End Table
Page 9



215-825
Sonoma Small Cocktail
Page 10



215-945
Sonoma End Table
Page 9



222-530
Wall Mirror
Page 27



222-535
Pier Mirror
Page 27



222-999
Two Door Cabinet
Page 18



234-460
Strada Credenza
Page 21



239-835
Manhattan Round
Cocktail Table Page 12



239-935
Manhattan Round End Table
Page 8



965-126N
Round Cocktail Table-
Nickel Leaf Page 13



969-350
Lund Etagere
Page 25



969-351
Lund Hall Cabinet
Page 18



969-352
Lund Chairside Table
Page 2, Back Cover



969-353
Lund Writing Desk
Page 26



969-360
Seville Round Cocktail Table
Page 13



969-361
Seville Round End Table
Page 3



969-362
Seville Round Spot Table
Page 3



969-370-CB
Fulton Console Table
Page 21



969-370-EG
Fulton Console Table
Cover, Page 1, 21



969-371-CB
Fulton Cocktail Table
Page 11



969-371-EG
Fulton Cocktail Table
Cover, Page 1, 11



969-372-CB
Fulton Side Table
Page 5



969-372-EG
Fulton Side Table
Page 5



969-373-CB
Fulton Drink Table
Page 5



969-373-EG
Fulton Drink Table
Page 5



969-374-CB
Fulton Hall Chest
Page 17



969-374-EG
Fulton Hall Chest
Page 1, 17



969-384
Kinsey Bookcase
Page 24



969-385
Kinsey Media Console
Page 20



969-390
Mya Chairside Table
Page 4



969-391
Luna Drink Table
Page 4



969-392 / 969-392W
Jonah 3 Drawer Cabinet
Page 16



969-393 / 969-393W
Amar 2 Drawer Bombe
Page 16



969-395
Ella Bar Cabinet
Page 19



969-400
Eli 4 Tiered Accent Table
Page 7



969-403
Calvert Cube
Page 2



969-404
Calvert Cocktail Table
Page 14



969-411
Dante Game Table with
Chess Pieces Page 15



969-412
Marcos Console Table
Page 22



969-413
Marcos Cocktail Table
Page 14



969-414
Marcos End Table
Page 6



969-415
Marcos Chairside Table
Page 6



969-416
Chicklet Console Table
Page 22



969-417
Chicklet End Table
Page 7



969-418
Bruno Console Table
Page 23



969-420
Branson Console Table
Page 20



969-421
Branson Cocktail Table
Page 12



969-422
Branson Side Table
Page 8



969-423
Branson 3 Drawer Cabinet
Page 17

101-825	Sonoma Small Cocktail	Page 10	969-374-CB	Fulton Hall Chest	Page 17
101-945	Sonoma End Table	Page 9	969-374-EG	Fulton Hall Chest	Page 1, 17
215-825	Sonoma Small Cocktail	Page 10	969-384	Kinsey Bookcase	Page 24
215-945	Sonoma End Table	Page 9	969-385	Kinsey Media Console	Page 20
222-530	Wall Mirror	Page 27	969-390	Mya Chairside Table	Page 4
222-535	Pier Mirror	Page 27	969-391	Luna Drink Table	Page 4
222-999	Two Door Cabinet	Page 18	969-392	Jonah 3 Drawer Cabinet	Page 16
234-460	Strada Credenza	Page 21	969-392W	Jonah 3 Drawer Cabinet	Page 16
239-835	Manhattan Round Cocktail Table	Page 12	969-393	Amar 2 Drawer Bombe	Page 16
239-935	Manhattan Round End Table	Page 8	969-393W	Amar 2 Drawer Bombe	Page 16
965-126N	Round Cocktail Table-Nickel Leaf	Page 13	969-395	Ella Bar Cabinet	Page 19
969-350	Lund Etagere	Page 25	969-400	Eli 4 Tiered Accent Table	Page 7
969-351	Lund Hall Cabinet	Page 18	969-403	Calvert Cube	Page 2
969-352	Lund Chairside Table	Page 2, Back Cover	969-404	Calvert Cocktail Table	Page 14
969-353	Lund Writing Desk	Page 26	969-411	Dante Game Table with Chess Pieces	Page 15
969-360	Seville Round Cocktail Table	Page 13	969-412	Marcos Console Table	Page 22
969-361	Seville Round End Table	Page 3	969-413	Marcos Cocktail Table	Page 14
969-362	Seville Round Spot Table	Page 3	969-414	Marcos End Table	Page 6
969-370-CB	Fulton Console Table	Page 21	969-415	Marcos Chairside Table	Page 6
969-370-EG	Fulton Console Table	Cover, Page 1, 21	969-416	Chicklet Console Table	Page 22
969-371-CB	Fulton Cocktail Table	Page 11	969-417	Chicklet End Table	Page 7
969-371-EG	Fulton Cocktail Table	Cover, Page 1, 11	969-418	Bruno Console Table	Page 23
969-372-CB	Fulton Side Table	Page 5	969-420	Branson Console Table	Page 20
969-372-EG	Fulton Side Table	Page 5	969-421	Branson Cocktail Table	Page 12
969-373-CB	Fulton Drink Table	Page 5	969-422	Branson Side Table	Page 8
969-373-EG	Fulton Drink Table	Page 5	969-423	Branson 3 Drawer Cabinet	Page 17



969-352 Lund Chairside Table, see page 2 /
Sherrill Furniture 4222-3D Sofa



Sherrill Occasional

9 Lenoir Rhyne Blvd. SE
Hickory, North Carolina 28602

Phone 828.322.8624

Fax 828.322.1948

sherrill-occasional.com